

## TE-16E Promotion Table

### File:

Please provide the source file, Like: Illustrator, Photoshop or Coreldraw.  
Files should be set up in CMYK color mode.  
All files please supply jpg files for proof.  
If you have any colour requirement, please give us the PANTONE NO. or printing sample.

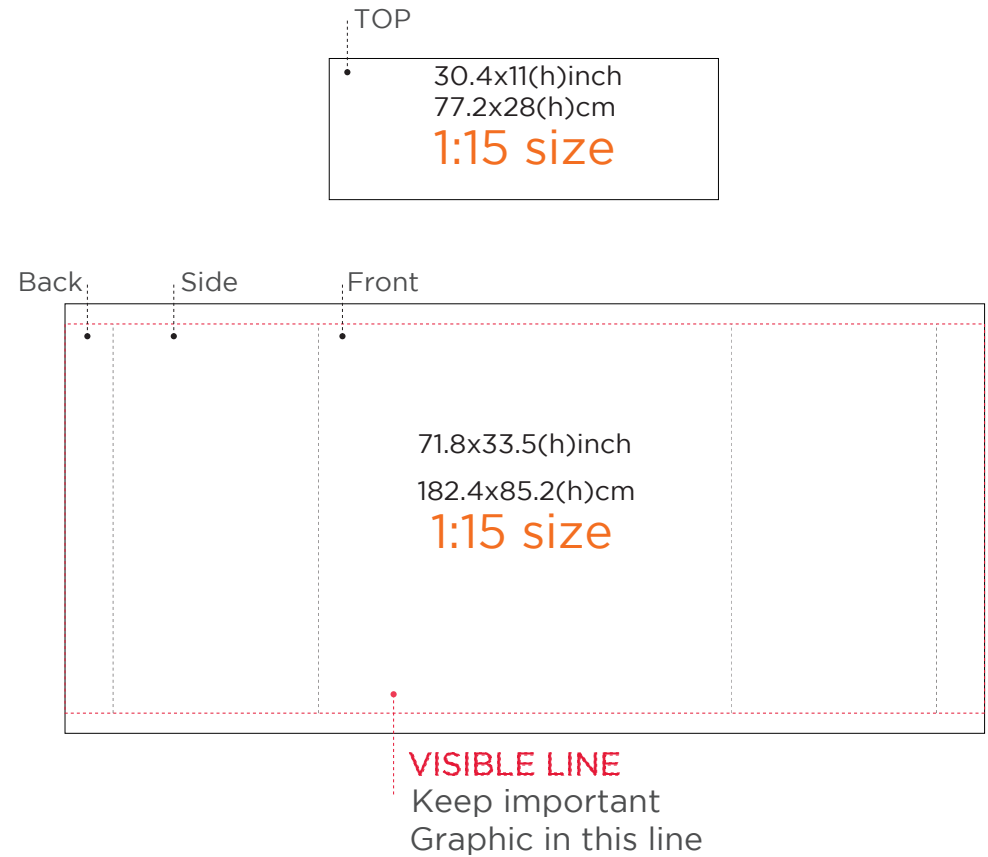
### File Setup:

Vectored file: > 1:1 size or size in right proportionate.  
Make sure all fonts convert to curves.  
Any images placed in vectored should be in CMYK format and with at least 100DPI resolution, and provide separate.

## PRODUCT INFORMATION



## TEMPLATE



**Printing Size: 77.2x28(h)cm  
182.4x85.2(h)cm**